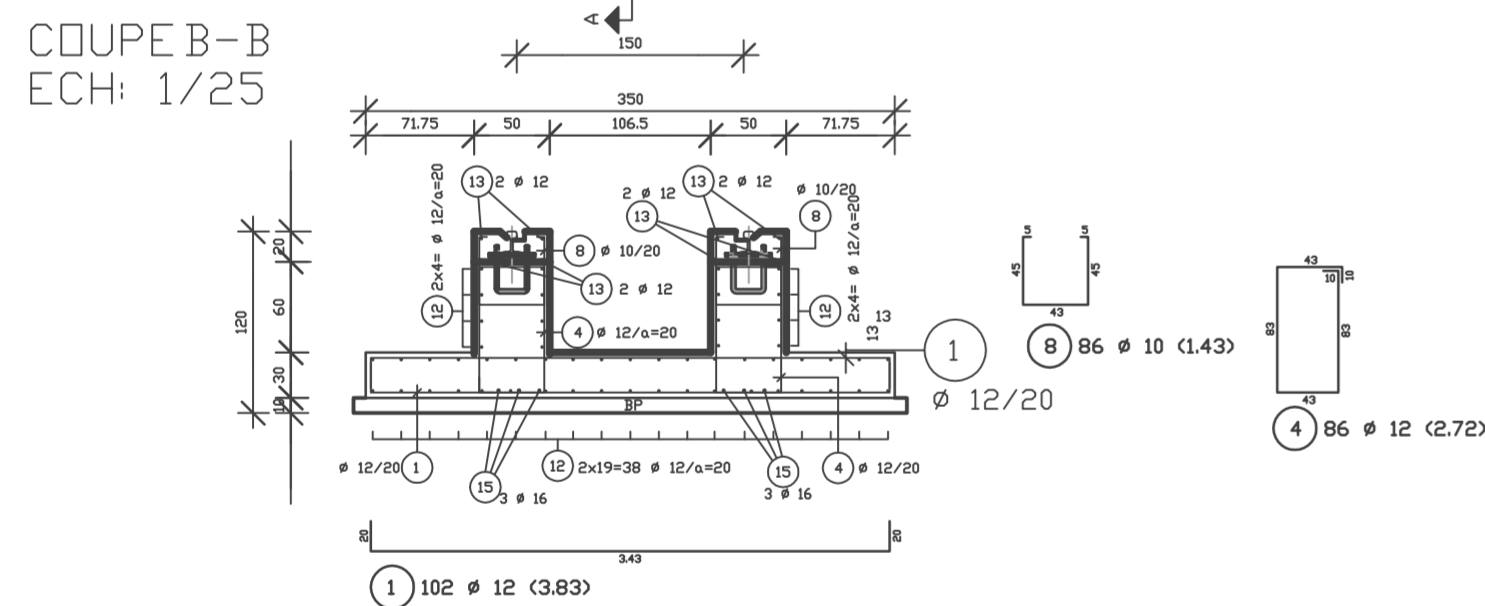
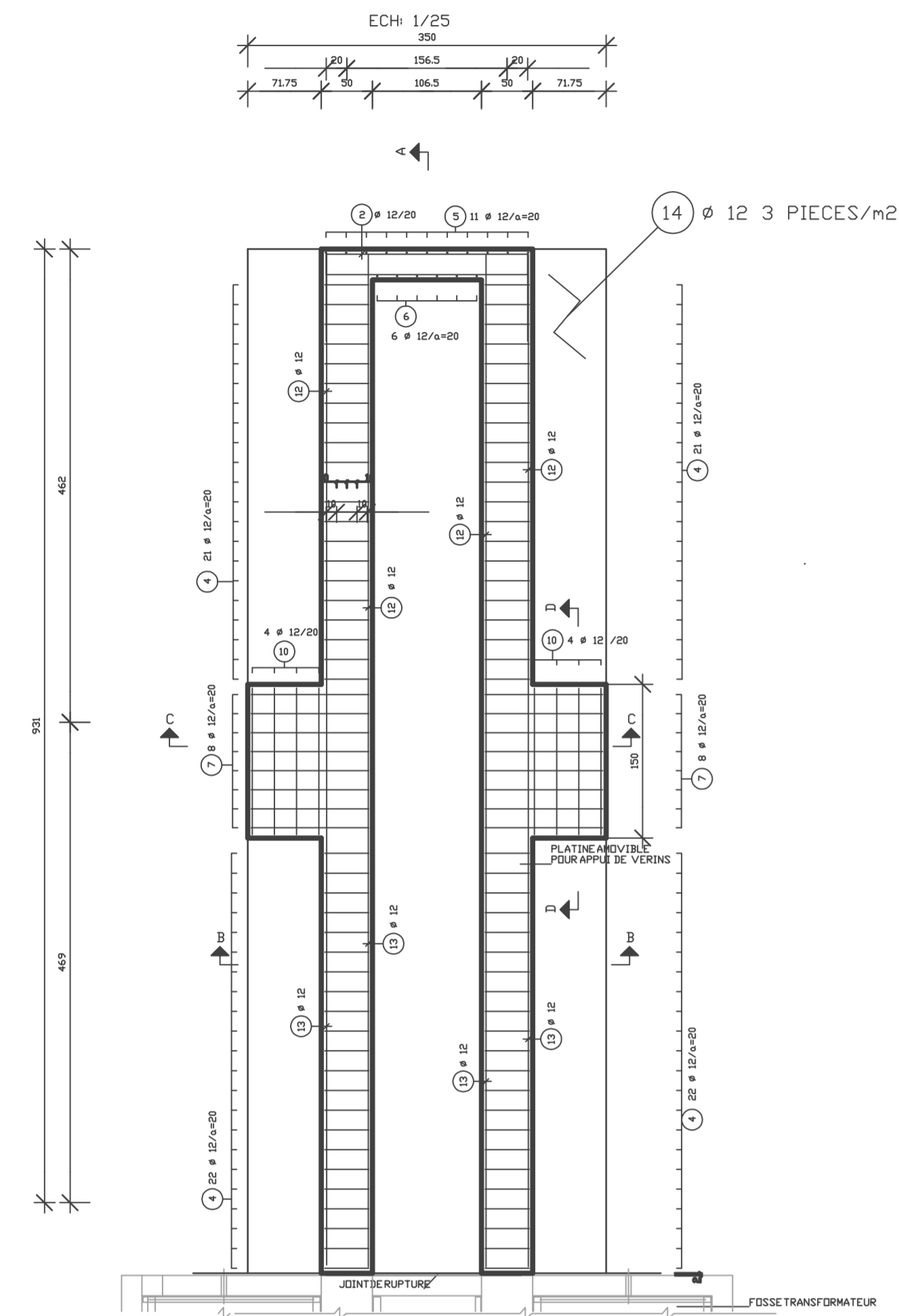
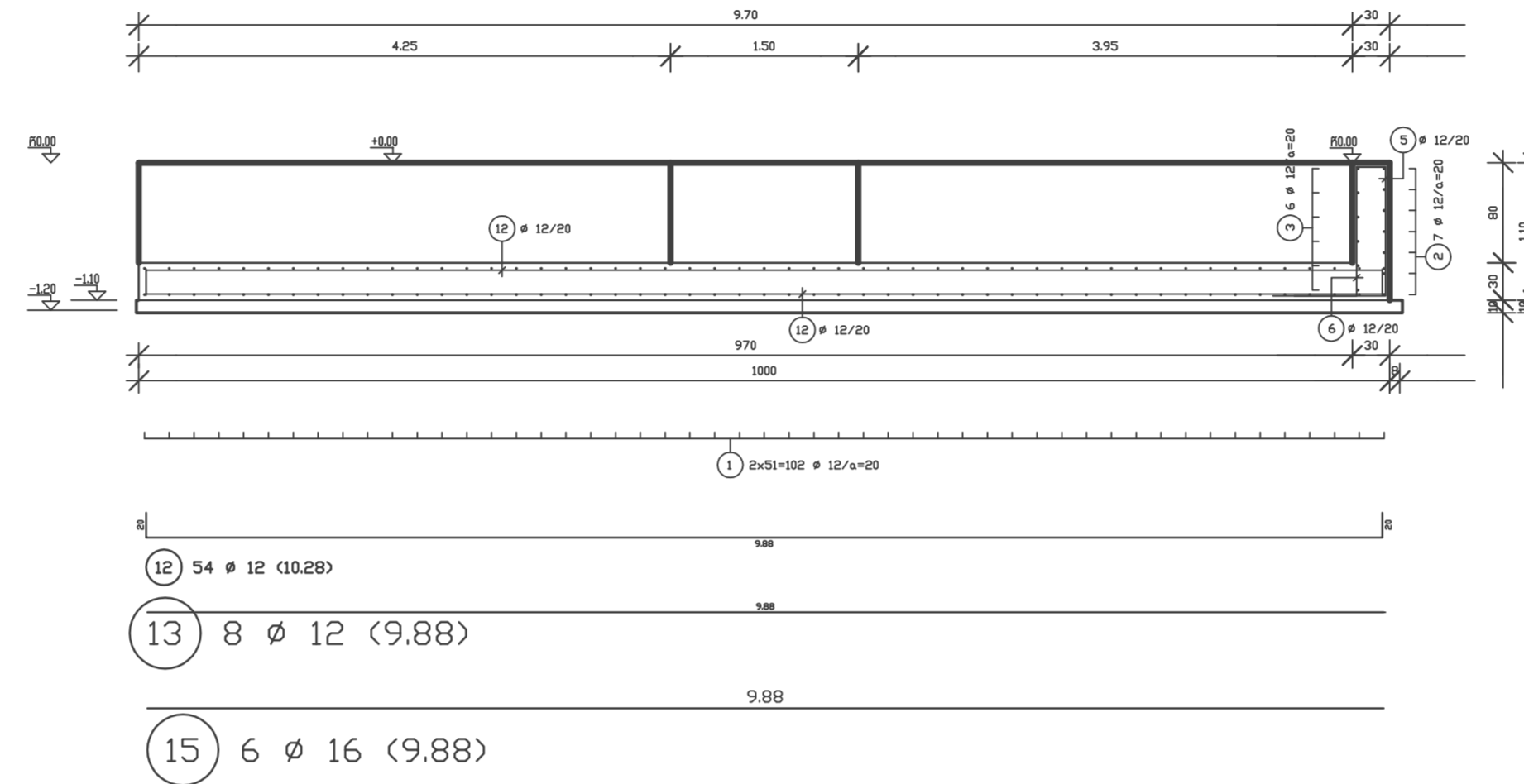


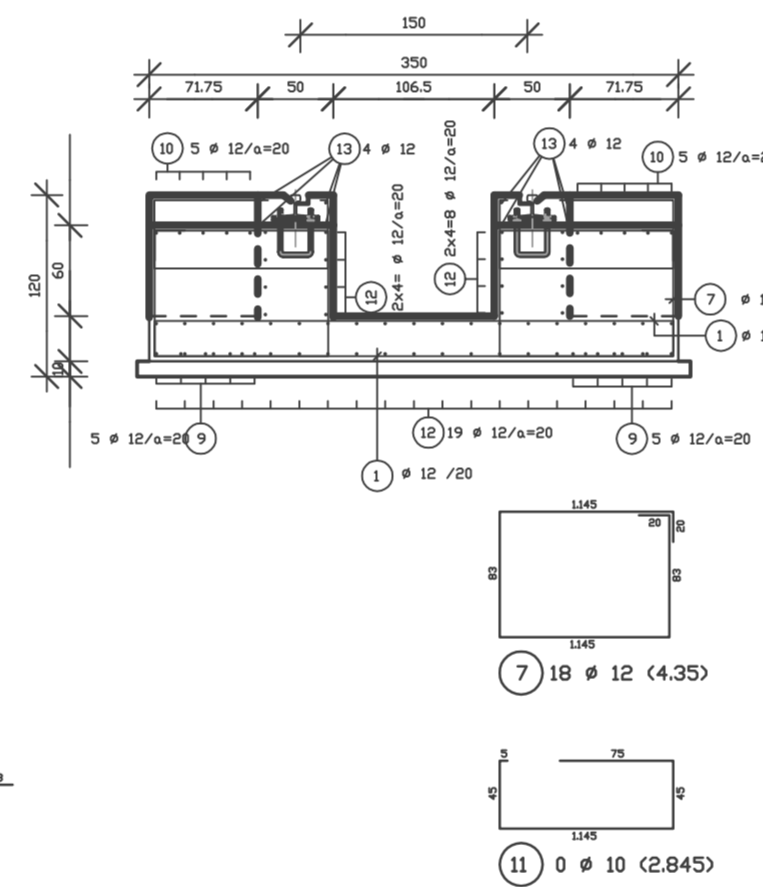
FERRAILLAGE DU CHEMIN DE ROULEMENT VUE EN PLAN



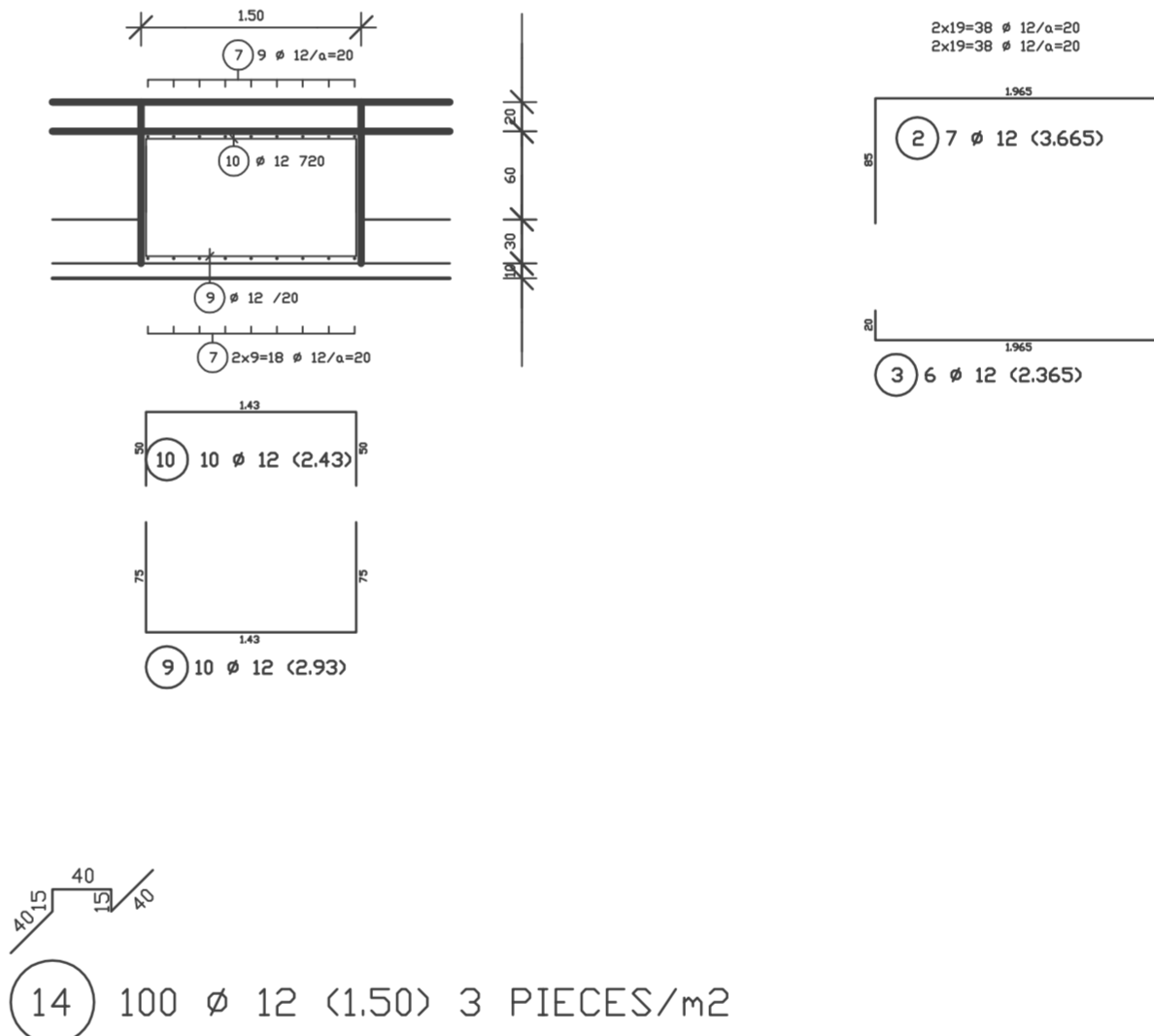
COUPE A-A
ECH: 1/25



COUPE C-C
ECH: 1/25



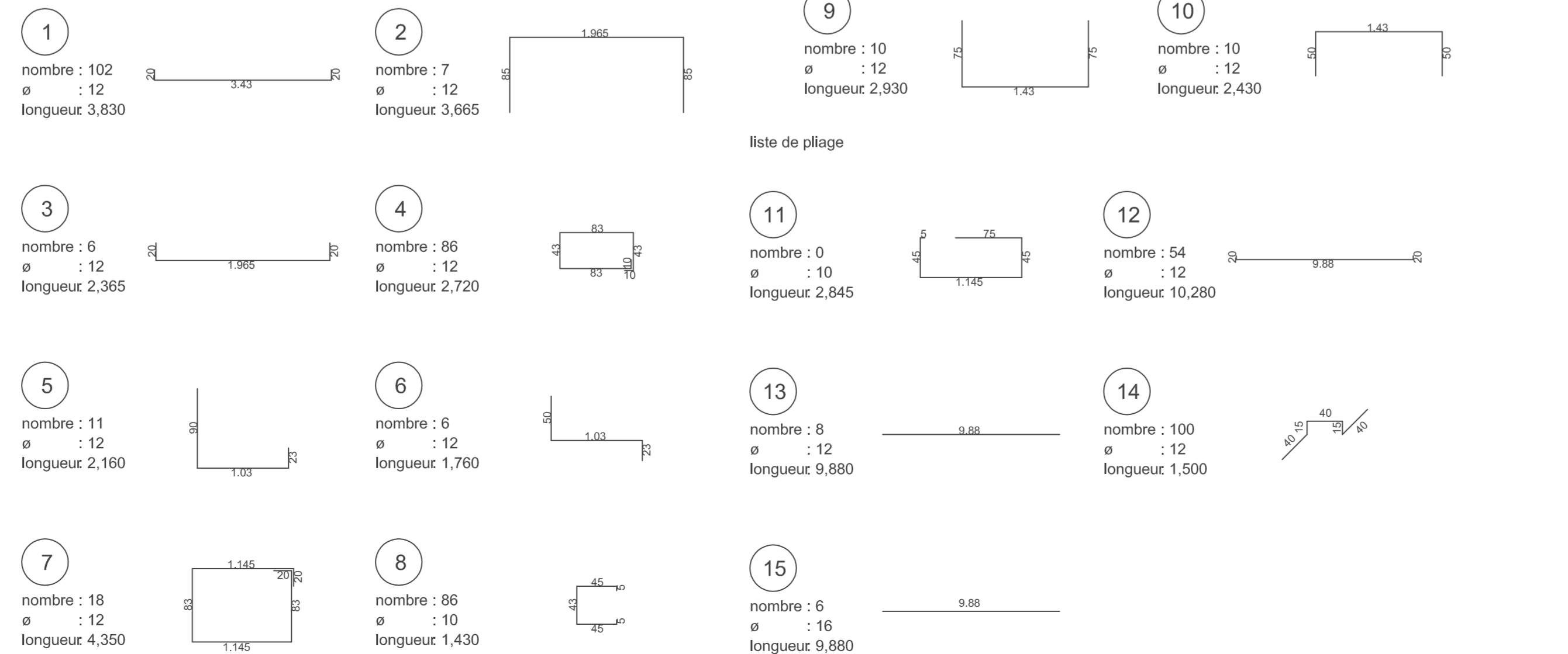
COUPE D-D
ECH: 1/25



NOTA:
 ARMATURE: BARRES A HAUTE ADHERENCE $F_e=400$ MPa
 BETON: RESISTANCE CARRACTERISTIQUE $F_{ct28}=25$ MPa
 TYPE DE CIMENT CPA 325
 DOSAGE BETON ARME 350 Kg/m³
 DOSAGE BETON DE PROPETE 150 Kg/m³
 PROFONDEUR D'ANCRAGE MINIMAL -140 mm $G_{sol}=0.5$ bar
 ENROBAGE 3.5 cm
 RECOUVREMENT DES ACIERS 50Ø

DOCUMENTS DE REFERENCES
 1HDA1 1 1782 PLAN DE MASSE
 1HDA1 1 5319 CHEMIN DE ROULEMENT DE TRANSFORMATEUR 12/14 MVA COFFRAGE RADIER
 1HDA1 4 1500 NOTE DE CALCUL MASSIF

liste de pliage



liste de pièces en rond acier BST 500 S		tous le données arrondi		
pos.	pièce	Ø (mm)	longueur de coupe (m)	longueur total (m)
1	102	12	3,830	390,660
2	7	12	3,665	25,655
3	6	12	2,365	14,190
4	86	12	2,720	233,920
5	11	12	2,160	23,760
6	6	12	1,760	10,560
7	18	12	4,350	78,300
8	86	10	1,430	122,980
9	10	12	2,930	29,300
10	10	12	2,430	24,300
11	0	10	2,845	0,000
12	54	12	10,280	555,120
13	8	12	9,880	79,040
14	100	12	1,500	150,000
15	6	16	9,880	59,280

quantité (mm)	(kg/m)	(kg)	(kg)
10	0,617	122,980	75,879
12	0,888	1,614,805	1,433,947
16	1,580	59,280	93,662
poids total			1,603,488